

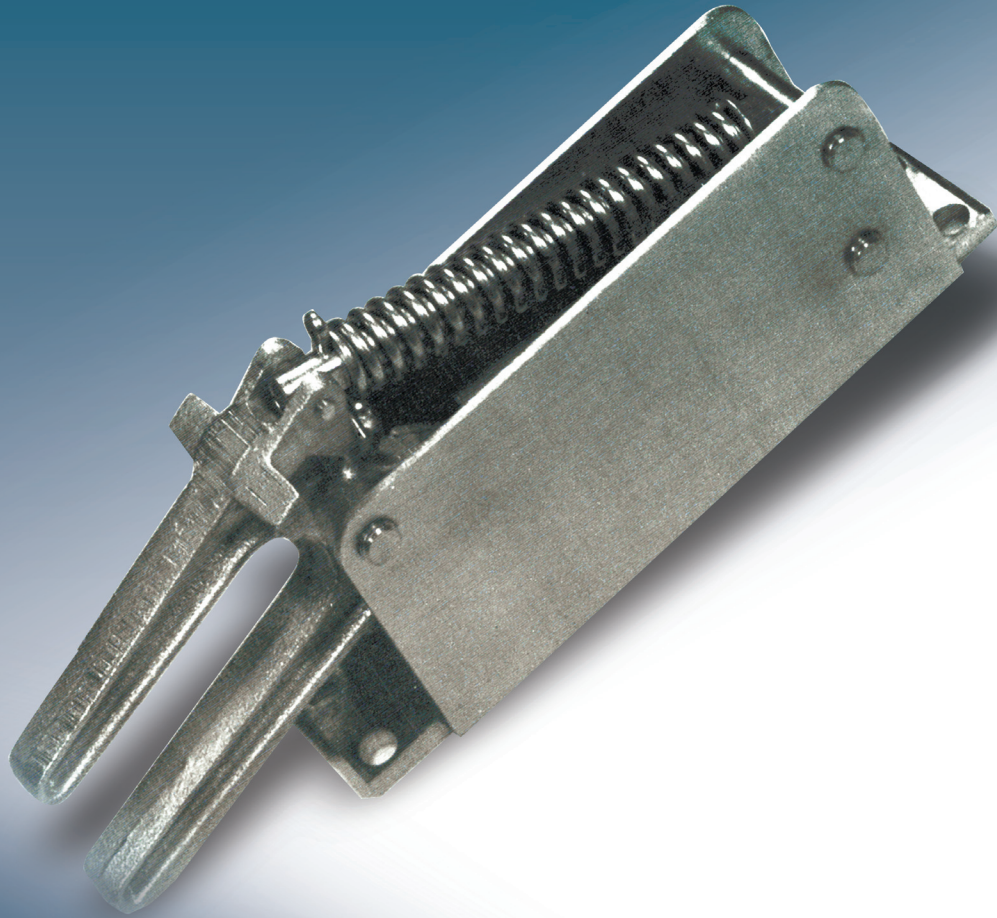
Air-Lec Air Seal for Swinging Doors

The Air-Lec Door Seal is the perfect answer for freezer and cooler doors or where a positive seal is required.

The Air-Lec Door Seal connects in parallel with the Air-Lec Swing Operator and functions automatically with the operator.

The pressurized cylinder releases the spring tension on the door to aid in opening. Upon closing, the mechanical door seal contacts the fork, and the powerful spring firmly draws the door tight to prevent air circulation and frosting. The exhausting air acts as a cushion to prevent slamming. The air seal does not prevent manual operation of the door.

A second Air-Lec Door Seal can be installed on large doors.



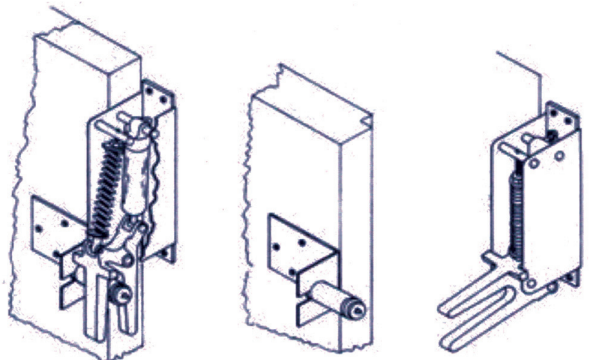
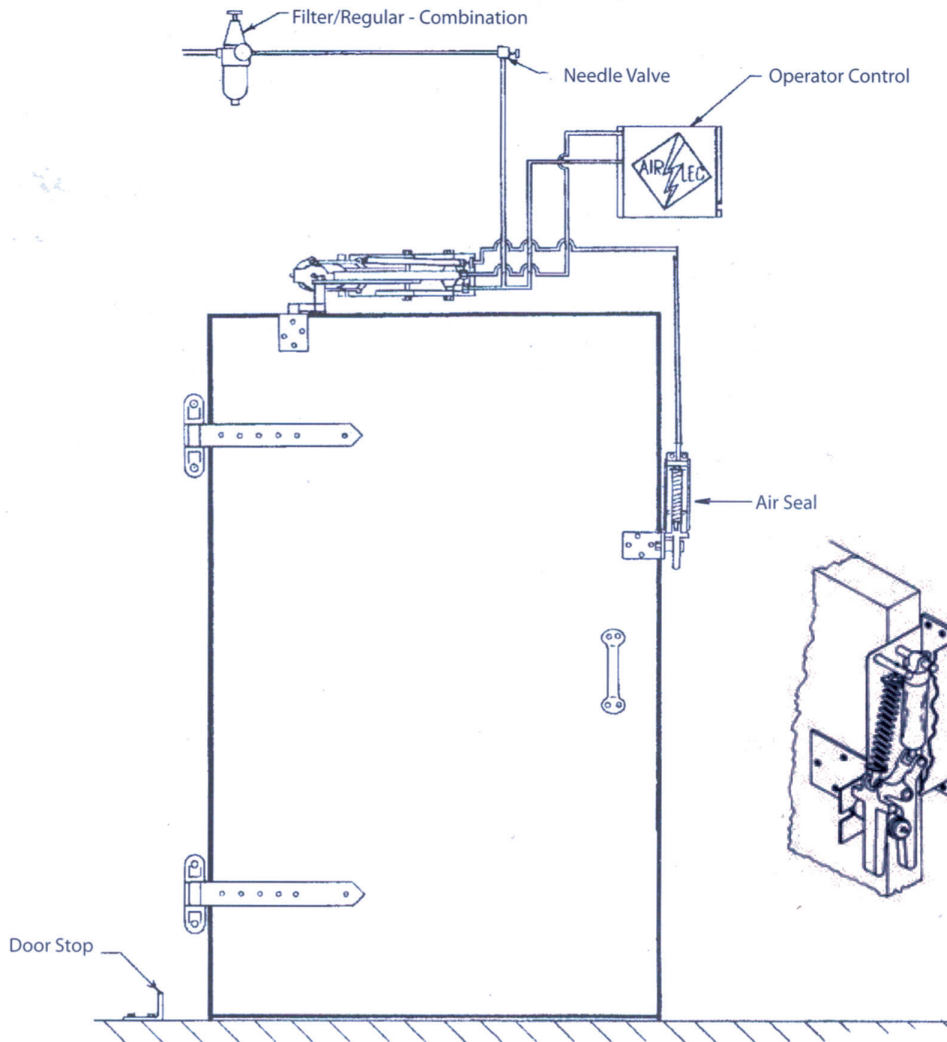
*Producing professional grade
door operators for nearly a century.*

***Old world wisdom meets
modern technology.
Safe. Fast. Dependable.***

Made in America.



AIR-LEC AIR SEAL FOR SWINGING DOORS



AIR REQUIREMENTS FOR COMPLETE CYCLE-OPEN AND CLOSE* (in cu. ft. free air.)

MODEL	DESCRIPTION	80 PSI	100 PSI	120 PSI
AS	For Standard Doors	.033	.042	.051
ASOL	For Overlap Doors	.033	.042	.051

H- Height 7 5/8"
W- Width 2 1/4"
P - Projection 12 3/4"

*Multiply by average operations per minute to determine total requirements (c. F. M)



Copyright ©Air-Lec
Industries, LLC

AIR-LEC INDUSTRIES, Inc.
MADISON, WI
(608) 244-4754 | air-lec.com

DESCRIPTION:
**AIR-LEC AIR SEAL
FOR SWINGING
DOORS**

FORM 1401-9-7/ 14-18

**MADE
IN THE
USA**